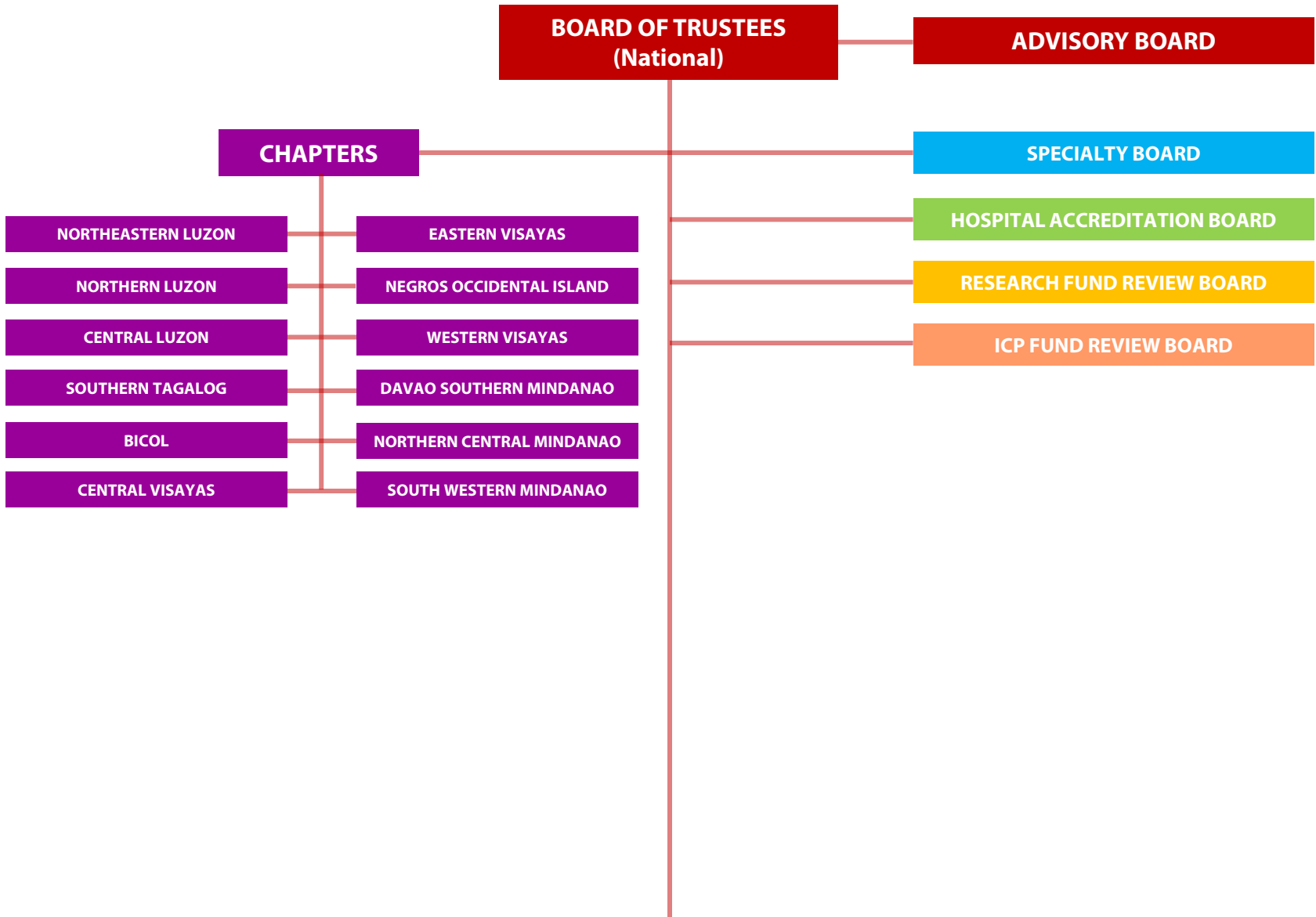
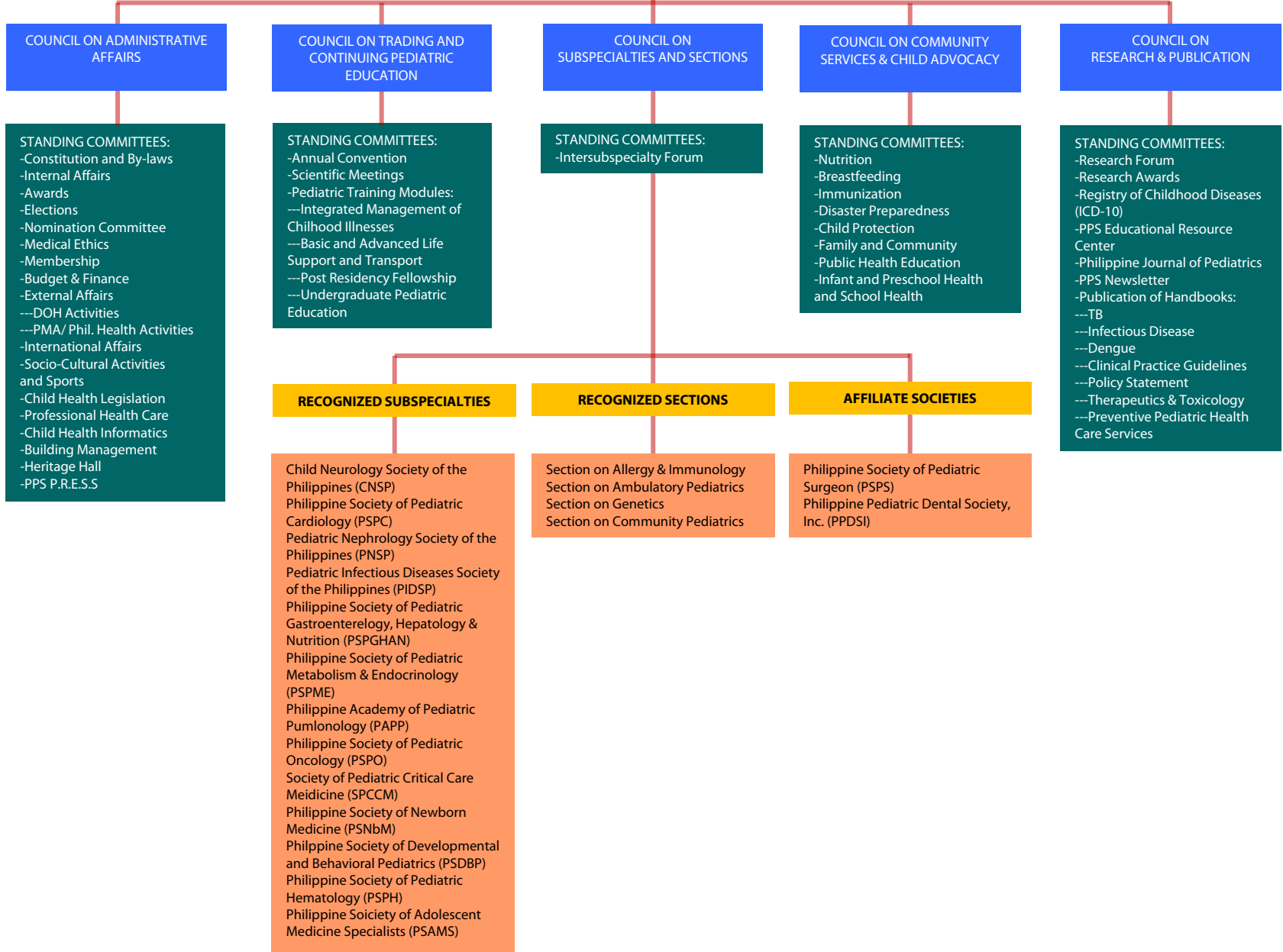


PHILIPPINE PEDIATRIC SOCIETY, INC.

ORGANIZATIONAL STRUCTURE





COUNCIL ON ADMINISTRATIVE AFFAIRS

- STANDING COMMITTEES:**
- Constitution and By-laws
 - Internal Affairs
 - Awards
 - Elections
 - Nomination Committee
 - Medical Ethics
 - Membership
 - Budget & Finance
 - External Affairs
 - DOH Activities
 - PMA/ Phil. Health Activities
 - International Affairs
 - Socio-Cultural Activities and Sports
 - Child Health Legislation
 - Professional Health Care
 - Child Health Informatics
 - Building Management
 - Heritage Hall
 - PPS P.R.E.S.S

COUNCIL ON TRADING AND CONTINUING PEDIATRIC EDUCATION

- STANDING COMMITTEES:**
- Annual Convention
 - Scientific Meetings
 - Pediatric Training Modules:
 - Integrated Management of Childhood Illnesses
 - Basic and Advanced Life Support and Transport
 - Post Residency Fellowship
 - Undergraduate Pediatric Education

COUNCIL ON SUBSPECIALTIES AND SECTIONS

- STANDING COMMITTEES:**
- Interspecialty Forum

COUNCIL ON COMMUNITY SERVICES & CHILD ADVOCACY

- STANDING COMMITTEES:**
- Nutrition
 - Breastfeeding
 - Immunization
 - Disaster Preparedness
 - Child Protection
 - Family and Community
 - Public Health Education
 - Infant and Preschool Health and School Health

COUNCIL ON RESEARCH & PUBLICATION

- STANDING COMMITTEES:**
- Research Forum
 - Research Awards
 - Registry of Childhood Diseases (ICD-10)
 - PPS Educational Resource Center
 - Philippine Journal of Pediatrics
 - PPS Newsletter
 - Publication of Handbooks:
 - TB
 - Infectious Disease
 - Dengue
 - Clinical Practice Guidelines
 - Policy Statement
 - Therapeutics & Toxicology
 - Preventive Pediatric Health Care Services

RECOGNIZED SUBSPECIALTIES

- Child Neurology Society of the Philippines (CNSP)
- Philippine Society of Pediatric Cardiology (PSPC)
- Pediatric Nephrology Society of the Philippines (PNSP)
- Pediatric Infectious Diseases Society of the Philippines (PIDSP)
- Philippine Society of Pediatric Gastroenterology, Hepatology & Nutrition (PSPGHAN)
- Philippine Society of Pediatric Metabolism & Endocrinology (PSPME)
- Philippine Academy of Pediatric Pulmonology (PAPP)
- Philippine Society of Pediatric Oncology (PSPO)
- Society of Pediatric Critical Care Medicine (SPCCM)
- Philippine Society of Newborn Medicine (PSNbM)
- Philippine Society of Developmental and Behavioral Pediatrics (PSDBP)
- Philippine Society of Pediatric Hematology (PSPH)
- Philippine Society of Adolescent Medicine Specialists (PSAMS)

RECOGNIZED SECTIONS

- Section on Allergy & Immunology
- Section on Ambulatory Pediatrics
- Section on Genetics
- Section on Community Pediatrics

AFFILIATE SOCIETIES

- Philippine Society of Pediatric Surgeon (PSPS)
- Philippine Pediatric Dental Society, Inc. (PPDSI)